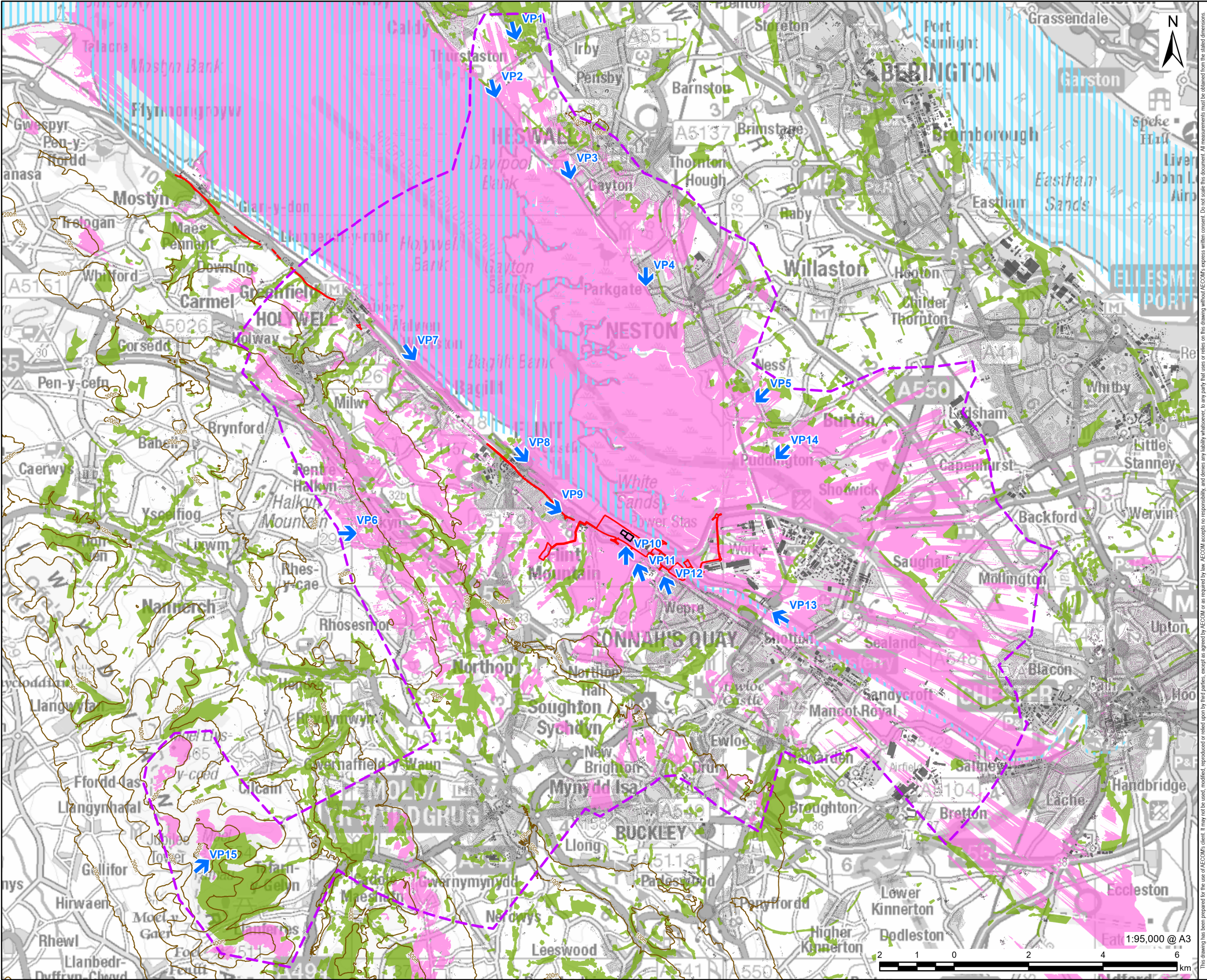


# Connah's Quay Low Carbon Power

Environmental Statement Volume III  
Figure 15-7: Zone of Theoretical Visibility - 65 m Main  
Site Structures (excluding absorber and HRSG)

Planning Inspectorate Reference: EN010166  
Document Reference: EN010166/APP/6.3  
Planning Act 2008 (as amended)  
Infrastructure Planning (Applications: Prescribed Forms and Procedure) Regulations 2009 - Regulation 5(2)(a)  
Revision 00





**PROJECT**  
Connah's Quay Low Carbon Power

**CONSULTANT**  
AECOM Limited  
The Colmore Building  
Colmore Circus, Queensway  
Birmingham, B4 6AT  
www.aecom.com

- LEGEND**
- Order limits
  - Study Area
  - Indicative Location of CCP CO<sub>2</sub> Stripper
  - Viewpoint Location
  - 100m Contour
  - Tidal Waterbody
  - Existing Building - Assumed Height of 8m
  - Woodland (National Forest Inventory) - Assumed Height of 12m
  - Zone of Theoretical Visibility - 65m CCP CO<sub>2</sub> Stripper Height

**NOTES**

© Crown Copyright 2025. All rights reserved. Ordnance Survey Licence AC0000808122. Contains OS data © Crown copyright 2025, 2024. Contains, or is based on, information supplied by the Forestry Commission. © Crown copyright and database right 2019 Ordnance Survey (100021242).

Zone of Theoretical Visibility (ZTV) has been generated using Ordnance Survey (OS) Terrain 5 Digital Terrain Model (DTM) which does not take into account the screening effect of vegetation, buildings, or other structures. Existing buildings have been incorporated into the DTM from OS Vector Map Local with an assumed height of 8m. Woodland has been incorporated into the DTM from the National Forest Inventory (NFI) with an assumed height of 12m. The ZTV is based upon a grid of points at 50m intervals within the CCP CO<sub>2</sub> Stripper Location with an assumed height of 65m, with an observer eye height of 1.6m. All heights mentioned are above ground level (AGL) unless otherwise specified.

**ISSUE PURPOSE**  
Environmental Statement

**DATE**  
July 2025

**PROJECT NUMBER**  
60717119

**FIGURE TITLE**  
Zone of Theoretical Visibility - Zone of Theoretical Visibility - 65m Max Height of Other Structures (Excluding Absorber and HRSG stacks)

**FIGURE NUMBER**  
Figure 15-7